



MYRTLE HOUSE
NURSERY

PARENT PROSPECTUS



BABIES • TODDLERS • PRE-SCHOOL • CLUBS

Welcome to Myrtle House Nursery

Our Vision & Values

At Myrtle House Nursery we aim to ensure that every child has a flying start in life and the best possible basis for their future growth and development by providing safe & stimulating environments with a wide range of activities and teaching, where a child's natural curiosity and unique strengths are encouraged and developed.

It is a place where everyone can feel special, have lots of fun, make friends and be encouraged to grow in confidence to explore new things. Our nurseries are a home away from home where children can feel safe and secure, where we hope families feel supported and connected.

We provide high quality childcare and education for children aged 0-12yrs old in an environment that allows children to know that they are special, accepted, valued and safe. Our approach is to give children the attention they need to develop new skills and interests and to discover that learning is an exciting and fun experience. Our passionate staff provide the children and families with support and respect.

Please continue to read to find out more about what makes Myrtle House Nursery a wonderful place for your family!!



Our Environments

Myrtle House Nurseries are carefully designed to not only be aesthetically pleasing but to be highly functional spaces putting children's needs and aspirations first.

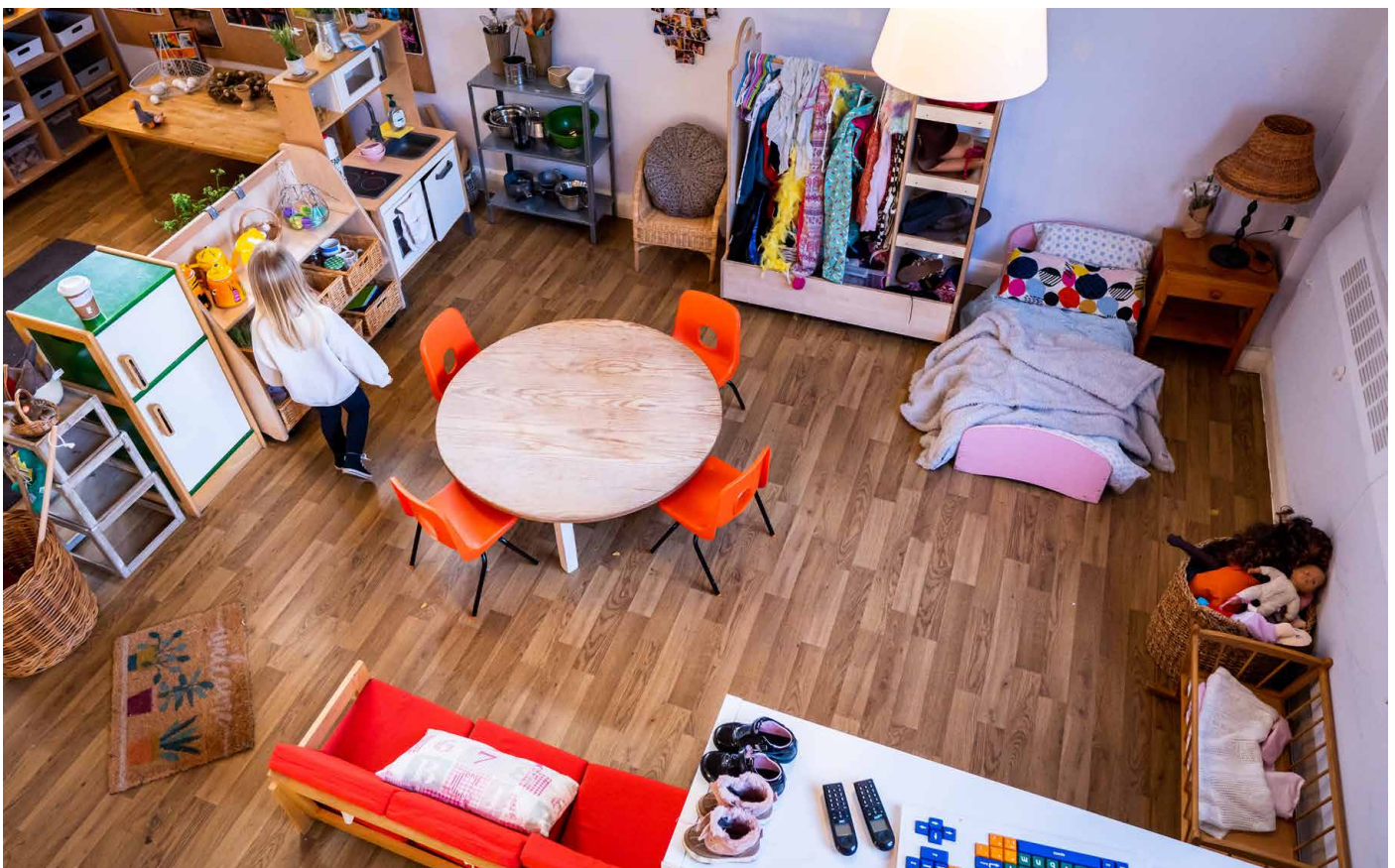
The nurseries are always bright, airy and clean environments. The rooms are light, spacious and beautifully divided into different dedicated areas of learning, which makes it stimulating and inviting, yet educational and fun.

Each environment is unique and contextual to its building and community. Large windows allow the use of natural daylighting to the spaces for much of the year. These windows also help to ensure plenty of healthy fresh air.

The children have large designated, secure outdoor play areas with a variety of equipment including trikes to ride, climbing frames, playhouses, tables, mud-kitchens, benches, sand and water play for the children to enjoy.

As young children are constantly on the move, they need an environment in which they can practice their emerging physical skills and with the use of soft play can do so safely. The indoor areas are also used for dancing and music movement.

iPads are available for children to develop their ICT skills, using different apps the children can look at colour, shape and numbers. The older children can take part in typing exercises using the keyboard as well as programs suitable for their age group. We also have a sensory area for all children to use, especially those with additional needs.





Group Sizes

Myrtle House Nursery has a family ethos where we hope all feel safe, happy and secure!

The spaces within our nursery setting are carefully designed for babies, toddlers and preschoolers giving each child room to learn and play, plus regular opportunities for interaction between the different age groups.

Baby Areas (0-2yrs) have a child ratio of 1:3

Toddlers (2yrs) have a child ratio of 1:4

Pre-School (3-7yrs) have a child ratio of 1:8

School Age (8-12yrs) have a child ratio of 1:10



Settling Your Child

Settling into the new environment of nursery is a big step into a new and exciting world for both yourself and your child.

We feel that all children need to have a ‘Settling In’ period before they start at Myrtle House Nursery to introduce you both to nursery life, and allow your child to feel safe and secure in the environment.

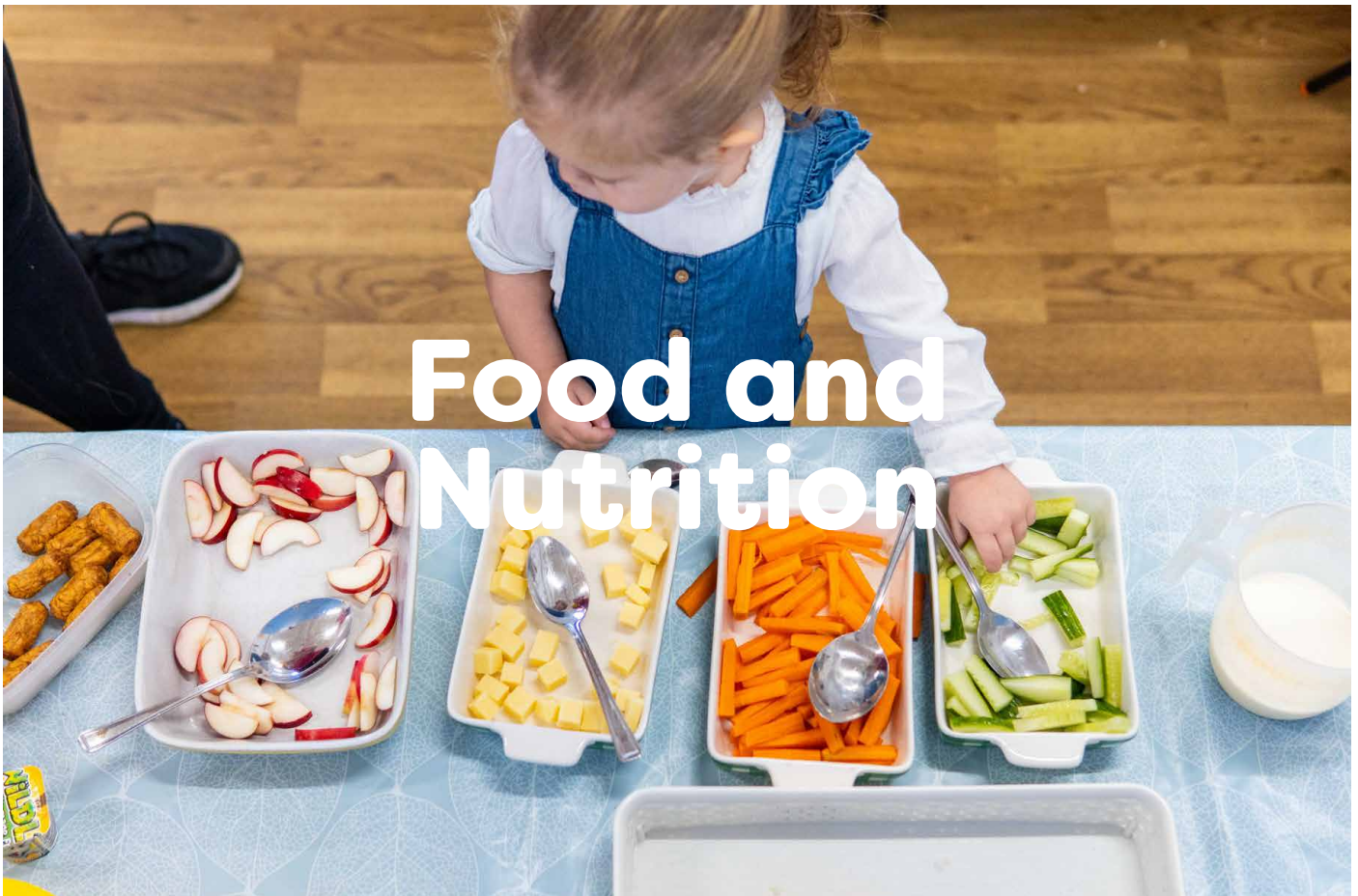
On your first and second visit you will stay with your child and you will be assigned a key worker who will be responsible for helping you and your child to settle into nursery life. They will also monitor your child’s progress and development, providing regular updates during the first few weeks of nursery life, whilst you both adapt to the new routine.

Anxiety spereration is completey normal and all children develop it to different degrees but as a nursery we are prepared for this and is why we take special care to make sure your child settles in.

Some suggestions that can help with settling your child:

- Stay calm by giving yourself plenty of time in the morning before drop off, especially while adapting to the new routine. Children pick up on our emotions very easily.
- If they want, let your child bring along a special toy, comforter or possession, so that they will feel comfortable in the new setting.
- Make sure to provide the nursery team information regards your child likes and dislikes and their home routines. This will allow the team to better understand your child’s personality.





Food and Nutrition

Healthy Eating

At Myrtle House Nurseries we strongly value the importance of providing a well-balanced and nutritional diet in establishing healthy eating habits for your child.

The Nursery have won various awards including an Oral Health and Nutrition Award and Healthy Pre-school Award.

Varied and healthy meals are prepared daily in our own professional catering kitchen using fresh locally sourced ingredients. Weekly menus are displayed on the parent noticeboard. We cater for all dietary requirements and children's individual needs and preferences are noted. If your child has any allergies or intolerances to certain foods or food groups please let us know when registering.



Sample Menus

Breakfast (8.00 - 8.30)

Low sugar cereal, toast with butter and orange juice

Morning Snack (9.15-10.15)

Rolling snack bar of healthy options, including fruit & vegetables, cheese, pancakes, pastries, milk/water

Lunch (12:00pm)

Chicken in cream sauce, creamed potato, carrots and broccoli. Fromage fraise

Afternoon Snack (13:15-14:15)

Rolling snack bar of healthy options, including fruit & vegetables, cheese, pancakes, pastries, milk/water

Tea (16:00)

Ham sandwiches, tomato & cucumber slices. Yogurt

Breakfast (8.00 - 8.30am)

Low sugar cereal, toast with butter and apple juice

Morning Snack (9.15-10.15)

Rolling snack bar of healthy options, including fruit & vegetables, cheese, pancakes, pastries, milk/water

Lunch (12:00pm)

Mini homemade meatballs in tomato sauce with pasta. Fresh fruit salad

Afternoon Snack (13:15-14:15)

Rolling snack bar of healthy options, including fruit & vegetables, cheese, pancakes, pastries, milk/water

Tea (4:00pm)

Scrambled egg on toast. Fresh fruit trifle



Children, Families and Teachers

When you arrive at Nursery to drop off your child you will be welcomed by one of our teachers who will greet you and your child by name and a big warm smile, which to us is probably the most important action in nursery life, helping the child's start to the day and reassuring yourself before you leave.

We encourage a great deal of participation with parents in nursery life and are always keen to discuss the development of your child, to respond to your concerns or simply to share the details of your child's day. We also invite you to share in circle time or an activity if you feel you would like to do this.

The lasting benefit of parental involvement in a child's development and pre-school education is now clearly supported by academic research, as well as providing a lot of pleasure for parents/carers and their children.

Parents need to know as much about their child's day at nursery as possible and our staff endeavour to inform parents of their child's activities and achievements as much as possible at the start and close of the day and through home school diaries. The diary contains a brief outline of the activities of the day, mealtimes, feed times and amounts for the babies and sleep times where necessary. This is particularly important for children who stay all day in nursery.

There is also a communication board for parents i.e. a notice board in the entrance hall where parents can read about various curriculum activities, news, observe the menus and any special events.





Curriculum

The Developing Child

Our curriculum aims to ensure that every child has a flying start in life and the best possible basis for their future growth and development.

We understand that each child develops at their own unique pace, acquiring and developing skills at different rates and our curriculum allows us to tailor our activities and experiences to extend and challenge each individual child.

At the heart of all we do is your child and encouraging them to develop to their full potential through a range of activities and hands-on experiences with the added support of our qualified early childhood teachers. As a nursery we place a high level of importance on outdoor play and learning activities.



Under 2's

The curriculum for the under 2's is based on the Birth to Three Matters framework.

Birth to Three Matters is a framework which helps develop babies and toddlers. It recognises that all 0-3 year olds have a need to develop and learn through interaction with people and exploration of the world around them.

Birth to Three Matters is divided into Four 'aspects' which focus the skill and competence of babies and young children and highlights the interrelationship between growth, learning, development and the environment in which they are cared for and educated.

The four aspects are split in to components, which are:

• A Strong Child:

Your child's key worker plays an essential role providing a nurturing environment where they will encourage and support decision making, empathising, providing opportunities for them to grow emotionally strong, capable, confident and self-assured.

Components:

- Me, Myself and I
- Being Acknowledged and Affirmed
- Developing Self-assurance
- A Sense of Belonging

• A Skilful Communicator:

To become skillful communicators babies and children need to be together with a key person and others in secure and loving relationships. Being with other children allows them to develop their social relations including friendship, empathy, shared emotions and experiences.

Component:

- Being Together
- Finding a Voice
- Listening and Responding
- Making Meaning



• A Competent Learner:

Children learn to make sense of the world and make connections from a young age through touch, sight, sound, taste, smell and movement. Creativity, imagination and representation allow children to share their thoughts, feelings, understanding and identities with others.

Components:

- Making Connections
- Being Imaginative
- Being Creative
- Representing

• A Healthy Child:

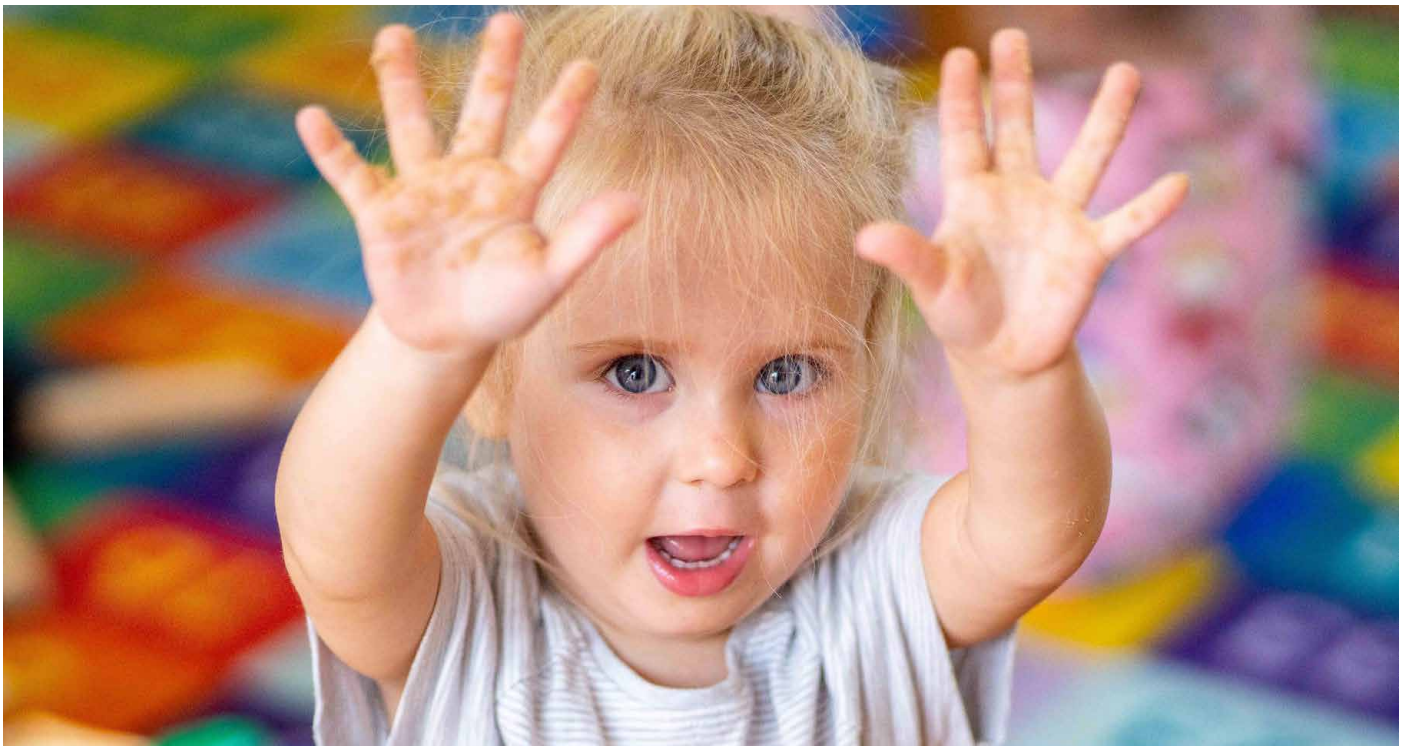
Being healthy means much more than nutritious food and being free from illness. For babies and young children, being special to someone and cared for is vital for their physical, social and emotional health and well-being.

Component:

- Emotional Well-being
- Growing and Developing
- Keeping Safe
- Healthy Choice







2 Year Old's and Over

We aspire to create in children positive dispositions towards learning which, if nurtured, will last a lifetime and provide the firm foundation which all our children need to support them in realising the purposes of Curriculum for Wales.

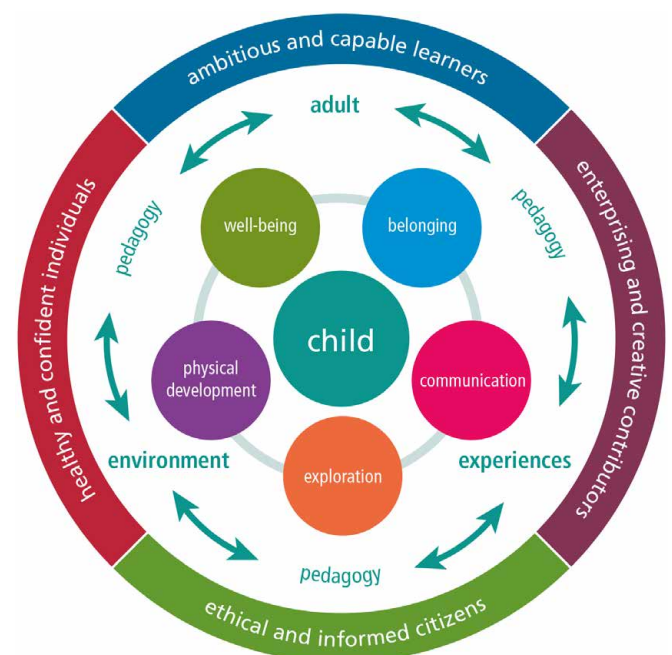
To accomplish this we implement the Welsh Governments 'A curriculum for funded non-maintained nursery settings' which recognises that every child in our setting is unique and will develop at different rates. It also recognises and values the Welsh language as an integral part of the unique culture of Wales and a language that should be taught in all settings.

We use this curriculum along with our knowledge and experience to reflect and respond to the individual needs of the children in our setting.

The experiences, knowledge and skills needed for lifelong learning, active citizenship and future employment begin in the early years.

The Four Purposes of the curriculum are:

- Ambitious, capable learners
- Enterprising, creative contributors
- Ethical, informed citizens
- Healthy, confident individuals



The Three Enablers

The key principles essential for holistic and meaningful learning for all children start with skilful, observant and interested adults, who provide authentic and engaging experiences in effective, exciting environments.

• Enabling Adults:

Our nursery practitioners model a joyful approach to learning, and encourage and support children's natural curiosity, making best use of the teachable moments that occur naturally as they observe or engage in their play. Your child's keyworker will endeavour to inform you of your child's activities and achievements as much as possible at the start and close of the day.

• Engaging Experiences:

We pre-plan a range of activities and experiences for the children, based around weekly themes, that are hands-on, purposeful and meaningful to the child. They will try to encourage children's independence, and offer an element of risk, challenge and opportunities, so they can experience success and develop resilience along their learning journey.

• Effective Environments:

For some children, their first experience of being away from their home environment will be when they enter our setting to begin their journey into education. It is our responsibility to work in partnership with children and their parents and carers to support them as they enter this new and exciting chapter in their development.

All our spaces both indoors and outdoors are created to always put children's needs and aspirations first. They are stimulating to the child, offering different areas for the children to be themselves, explore, practice and enhance their skills in a relaxed environment. Through exploration of their environment, children will begin to develop a sense of belonging and an appreciation of the world around them.



The Five Developmental Pathways

Central to this curriculum are five key developmental pathways that are fundamental to the learning and development of all young children. These developmental pathways are child-centred and are interdependent, having equal value in supporting overall development and progress.

• Belonging:

Belonging is essential to a child's sense of happiness and well-being. When they are young, children begin to develop a sense of how they fit in to the many groups to which they belong, and their importance within them.

• Communication:

Communication is fundamental to children's development; it is vital to the foundation of relationships and essential for learning, play and social interaction.

• Exploration:

Children's natural curiosity about the world around them is a strong motivator for exploration. Children are endlessly curious problem solvers who often find delight, awe and wonder in everyday occurrences.

• Physical Development:

All children have a natural need to move, or be moved, and to move or manipulate objects, often repeatedly, as part of their development.

• Well-being:

Children are influenced by the adults, experiences and environments they encounter. When these three work together successfully, they create a strong sense of well-being for all.

(Taken from the Welsh Governments 'A curriculum for funded non-maintained nursery settings')







Why play matters

Play is very important to a child's development and supports their learning journey.

If learning is fun children will naturally become more absorbed in what they are doing and hopefully develop a life-long love for learning.

Young children develop many different skills through the power of play, including imagination, creativity, a sense of adventure, communication, concentration, emotions, social skills, problem solving, collaboration and many more.

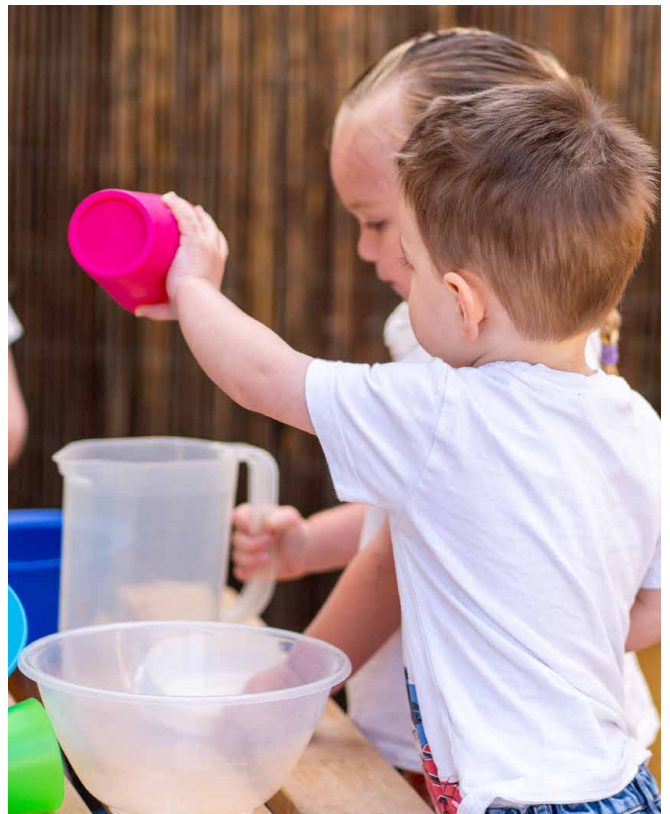
Play helps to develop a child's sense of self worth by making them aware of their own abilities and to help them feel positive about themselves.

Play doesn't only develop a readiness for school but for life!

At Myrtle House Nursery we provide the children with a wide range of activities to help them learn in different ways:

- **Musical Instruments** - Singing and playing musical instruments helps to develop rhythm, listening and hearing.
- **Building blocks, jigsaws and shape sorters** - These help develop logical thinking, problem solving, recognition of different shapes and sizes.
- **Sand & Water trays** - Helps to introduce science and maths to the children, including measuring, buoyancy, differences in solid and fluid objects.
- **Playing games** - Teaches sharing, waiting your turn and teamwork.
- **Dancing, climbing and playing ball games** - Helps to develop co-ordination, strength, movement and flexibility.
- **Painting, drawing, role-playing, using playdough** - Encourages children's creativity and imagination and allows them to express feelings and emotions.





CSSIW & ESTYN Reports

We are independently inspected by both CSSIW and Estyn to check standards, well-being, teaching, care and support are being maintained.

CSSIW are independent regulators of social care and childcare in Wales and inspect all registered services to make sure they are safe for the children and people using them.

The latest report can be found at:
<https://careinspectorate.wales/myrtle-house-day-nursery>

Estyn inspect all education providers in Wales at least once every 7 years checking on standards, well-being and attitude to learning, teaching and learning experience, care, support and guidance and leadership and management.

The latest report can be found at:
<https://www.estyn.gov.wales/provider/6699147>



Comments from the Reports:

• Wellbeing:

- Children are happy, relaxed and comfortable with their carers. They approach them confidently when they need comfort or assistance.
- All the children are very well behaved. They share resources well and are starting to take turns.

• Learning:

- Most children join in enthusiastically with songs in both Welsh and English and know the words for a wide range of songs and rhymes.
- Many use a variety of tools confidently to develop early writing skills, demonstrating increasing control.
- Most children make good progress in developing Welsh language skills
- Many children are beginning to develop problem solving skills.

• Care and development:

- The snacks and meals offered to the children are healthy and nutritious and include fresh fruit and vegetables.
- Through daily routines, teachers provide valuable opportunities for children to exercise and play outdoors.
- The setting works with other projects being run from Myrtle House, including Llanelli Foodbank, raising the children's awareness of the importance of caring and helping others.
- The setting has very effective procedures to support children with additional needs.
- They keep parents very well informed about their child's progress and involve them appropriately in setting targets.



• Teaching and Assessment:

- The setting provides children in the foundation phase with a valuable range of learning experiences across all areas of learning.
- Teachers make beneficial use of a wide range of visitors to the setting to enhance the curriculum, including the regular visits of the police and fire services.
- Teachers plan stimulating activities using a wide range of tools and different media to encourage children's early writing skills.
- Nearly all children have good opportunities to learn about Welsh culture and tradition when celebrating St Davids Day and St Dwynwen's Day.
- The setting has a worthwhile range of learning experiences to foster children's spiritual, moral, social and cultural development successfully.
- The teachers create a calm and purposeful learning environment.
- They provide good opportunities for children to learn through play and active involvement.

Environment:

- The premises are clean and well maintained.
- The premises are welcoming, warm and comfortable and provide a rich environment for play. Children's craftwork, photographs and educational posters are displayed throughout the setting contribute towards a stimulating environment.
- The setting has a good range of toys and equipment to promote cultural awareness.
- The outdoor area is interesting and include natural areas for children to explore and learn. There are suitable covered areas which allow children to play outdoors regardless of the weather.

Leadership and Management:

- The setting has a positive ethos where the efforts of all staff and children are valued.
- The setting has very strong partnerships with parents and the local community that make positive contributions to children's well-being.
- The setting leader has a good working relationship with senior childcare staff at the local college and as a result the setting benefits from the sharing of expertise.





Additional funding

You could be eligible for support with your child's nursery fees:

Flying Start is a Welsh Government funded programme targeted at 2 year old children and their families who live in certain areas of Carmarthenshire.

Help available includes:

- Part-time childcare for 2-3 year olds.
- Enhanced Health Visiting service.
- Access to parenting programmes.
- Support for children to learn to talk and communicate.

Estyn funding is provided by the Welsh Government to ensure that all children in Wales have access to free part time Early Years Education from the beginning of the term following the child's third birthday. Each qualifying child can receive a maximum of 10.0 hours per week of funded Early Years Education if they attend an approved, funded pre-school education setting.

The Childcare Offer for Wales offers help with childcare costs for working parents of 3 to 4 year olds. Under this offer, you could claim 30 hours of early education and childcare in Wales a week, for up to 48 weeks of the year. It aims to make life a bit easier for parents by offering help with childcare costs.

The Offer has already helped parents from all over Wales to return to work, increase their hours or work more flexibly. Others are taking training opportunities to develop their skills, change their job or even start their own business. The aim is to give working parents a bit of extra money every month, to spend on the things that are important to their family.

If you are unsure if you qualify for any of the above offers please contact us on 01554 744791 or email nurseryoffice@myrtlehouse.org.uk

Our Settings

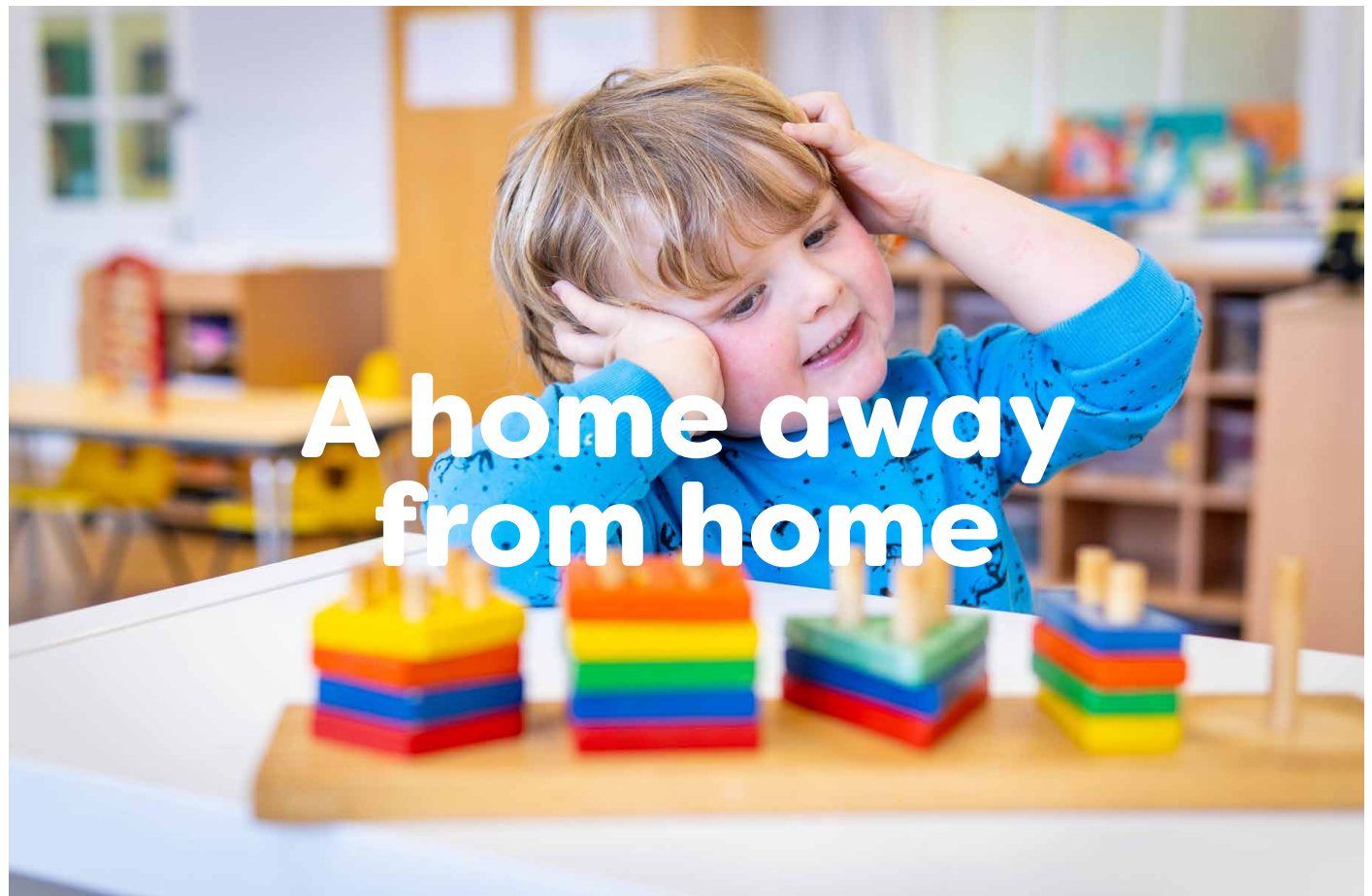
We now offer two great locations across Llanelli

Myrtle House Nursery

22 Myrtle Terrace, Llanelli, SA15 1LH
CIW Reg. No: W080000800S0001
Monday-Friday // 8am-6pm
nurseryoffice@myrtlehouse.org.uk

Myrtle House Nursery at Pentip School

Pembrey Road, Llanelli, SA15 3BL
CIW Reg. No: W16/00002735
Monday-Friday // 8am-6pm
nurseryoffice@myrtlehouse.org.uk



A home away from home



After School Club

Your child's journey with us doesn't have to end when they start school. We offer a fun and enjoyable After School Club at Myrtle House, with the aim to create a relaxed atmosphere where children can wind-down after school and new friendships are formed!

The programme is available to children in school years Reception - Year 6 every day during School term times, 3.00pm - 6.00pm, with the children enjoying lots of activities including outdoor play, cookery, social games, lego, art & crafts, gardening, games and much more!!

School pick ups can be arranged. Please speak to our nursery team when booking to check if this service is available from your child's school.



Holiday Club

Myrtle House Kids Holiday Club is all about having fun and making new friends in a safe and enjoyable space!

If you have older children and are looking for childcare during the school holidays we run a Holiday Club at Myrtle House which is available to children aged 4-11 years old (school years Reception - Year 6) every day during School holidays, 8.00am - 6.00pm.

Each day the children take part in different activities around that week's theme. The programme include creative arts & crafts, cookery, outdoor adventure, den-building, water-play, group challenges, high energy games and much more!! It is our aim to create new experiences for the children, hopefully leaving them with amazing memories!





MYRTLE HOUSE NURSERY

WWW.MYRTLEHOUSENURSERY.ORG.UK

 /MYRTLEHOUSENURSERY

Myrtle House, 22 Myrtle Terrace
Llanelli, SA15 1LH

Tel: 01554 744791 // Email: nurseryoffice@myrtlehouse.org.uk



Welsh Network of Healthy School Schemes



Cynlluniau Ysgolion Iach - Rhydwaith Cymru

